

LANA GATTO



FRESH

MESH DRESS

LANA GATTO

Size: 10/12 UK - **Size:** 6/8 S USA - **Size:** 36/38 EU

Skill Level: intermediate

NOTE: to obtain larger or smaller size, add or subtract 5 squares for each size across total circumference.

How much yarn: 300 g of Fresh yarn, in lilac shade no. 8711

Crochet Hook: A 2.00mm (no. 14) crochet hook.

A 2.50mm (no. 12) crochet hook.

Sewing needle: Yarn needle with rounded point

STITCHES

Using crochet hook: chain (ch) - Double crochet (dc)

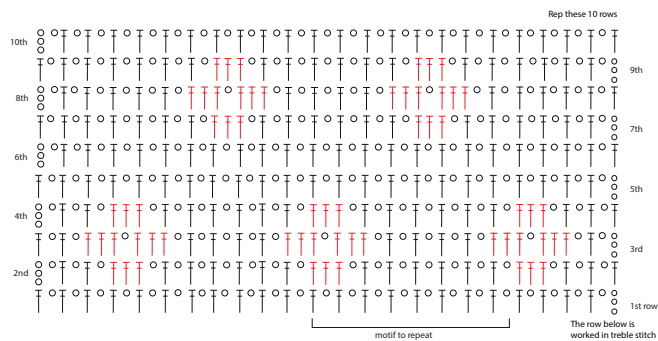
Treble (tr)

REVERSE DOUBLE CROCHET (rev dc): it is made by doing dc stitches backwards, from left to right.

TREBLE TWO TOGETHER (2 TR TOG): (yarn over, insert hook in next stitch, yarn over and pull up loop, yarn over, draw through 2 loops) twice, yarn over, draw through all loops on hook = 1 stitch decreased.

MESH STITCH – FILET STITCH – DIAMOND MESH STITCH: work these stitches following diagram and key. See also instructions for repeating motifs in length and in height.

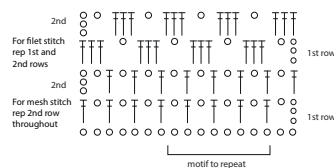
DIAMOND MESH STITCH



MESH STITCH AND FILET STITCH

KEY

- = chain (ch)
- † = treble (tr)



TENSION

23 sts and 11 rows measure 10 cm square over mesh st with 2.00 mm (no. 14) hook.

INSTRUCTIONS

Back: with 2.00 mm (no. 14) hook, ch109 and work as follows: 12 rows in mesh st, 12 rows in filet st, 1 row trebles, 17 rows in mesh st, 1 row trebles, 1 row in mesh st (= row of holes for cord), 1 row trebles dec 14 sts evenly across this row (for dec 1 st, work 2tr tog), then cont to work in diamond mesh st until to end. At the same time, work 53rd row in this manner for neck shaping: do not work centre 11 squares and cont to work each side separately, dec on neck edge 2 sts every row until 13 squares remain. When 37 rows are worked from neck shaping beg, fasten off.

Front: with 2.00 mm (no. 14) hook, ch121 and work as Back until row in mesh st for cord is worked. Then work 1 row trebles dec 26 sts evenly spaced. Cont to work as follows:

10 rows in diamond mesh st, 1 row trebles, 12 rows in filet st, then cont to work in diamond mesh st until to end. At the same time, divide work in half at 72nd row for neck shaping and cont to work each side separately, dec on neck edge every row: 2 sts 3 times and 1 st 14 times until 13 squares remain.

When 18 rows are worked from neck shaping beg, fasten off.

Sleeves: sew shoulder seams. With 2.00 mm (no. 14) hook, work a foundation row of 13 squares across armhole sides, 19 rows below shoulder seam both Front and Back. Join yarn with a ss and work: **Row 1:** ch3 (= 1st tr), * ch5, miss 2 rows, 1 tr around tr bar of next row; rep from * 12 times, ch5, miss 2 row, end with 1 tr, turn. **Row 2:** ch3 (= 1st tr), * ch3, 1 dc into next ch5-arch, ch3, 1 tr into next tr; rep from * to end, turn. **Row 3:** ch3 (= 1st tr), * ch5, miss next 2 arches and centre dc, 1 tr into next tr; rep from * to end, turn. Rep Rows 2-3 for 5 times more (= 13 rows). Fasten off.

Cord: with yarn used double and crochet hook 2.50mm (no.12) work as follows: ch2, insert hook into first ch, yarn over hook and draw a loop, yarn over and draw 1 stitch. Cont as before, inserting hook into last but one stitch worked throughout. When cord is long 130 cm or as you prefer, fasten off.

FINISHING

Sew sleeve and side seams. With 2.00 mm (no. 14) hook, work a round of trebles around front-and-back neck shaping, working 3 tr tog as follows: (yarn over, insert hook in next stitch, yarn over and pull up loop, yarn over, draw through 2 loops) 3 times, yarn over, draw through all loops on hook, at centre Front to obtain V-point Then work a round in rev dc. Fasten off. Around each sleeve work as follows: with 2.00 mm (no. 14) hook, join yarn to seam with a ss, work 1 shell (= ch3 and 3 tr into same st), * miss 3 ch (or 2 ch and 1 tr), into next ch or st work 1 ss and 1 shell; rep from * all around ending with 1 ss into first st. Fasten off. Work the same round of shell around dress edge but miss 2 ch instead of 3. Insert cord into row of holes. **Strings for back neck-shaping:** with yarn used double and crochet hook 2.50mm (no.12) join yarn with a ss to a tr of finishing round, corresponding to 4th row below shoulder seam and work a chain string approx 35 cm long. Fasten off. Make a string on each side of back neck-shaping.

